













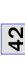

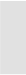
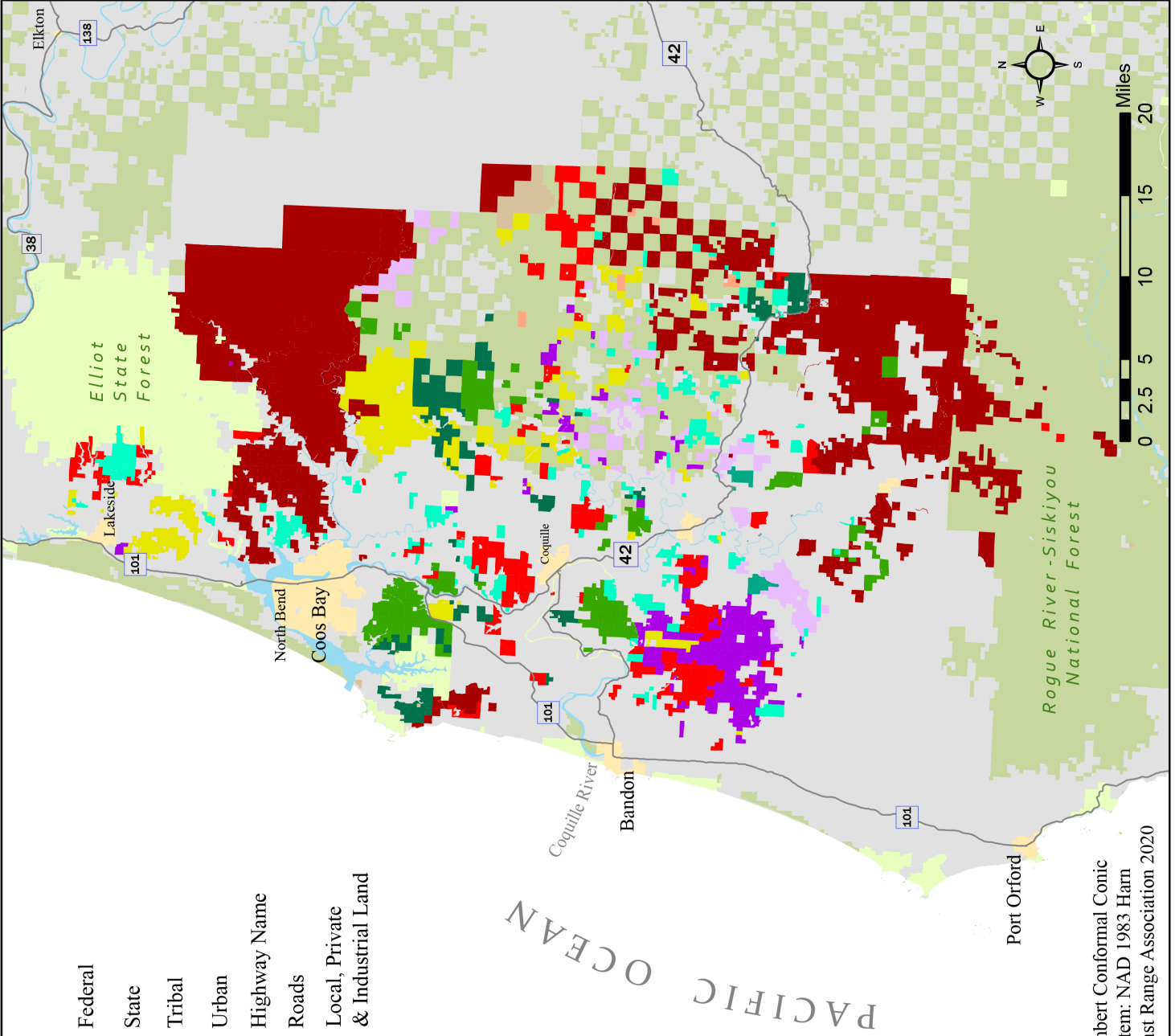
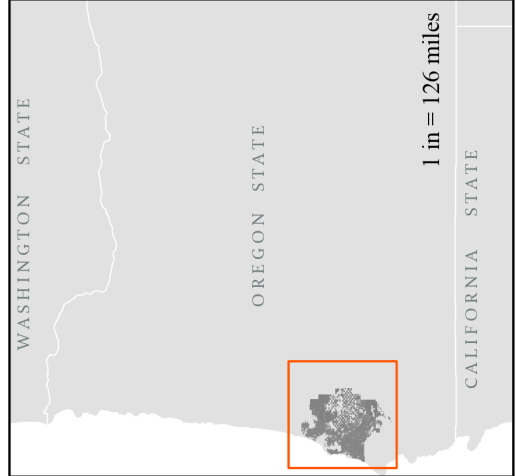


Coos County

Top Timber Holding Companies

	Weyerhaeuser	268,172 acres
	Forest Investments Associates	62,025 acres
	Roseburg	40,156 acres
	Rayoner Timber	30,084 acres
	Lone Rock	23,692 acres
	Moore Mill Lumber Co.	23,217 acres
	Campbell Global LLC	18,185 acres
	Catchmark	17,954 acres
	South Coast Lumber Co.	1,626 acres
	Seneca	1,320 acres

	Federal
	State
	Tribal
	Urban
	Highway Name
	Roads
	Local, Private & Industrial Land



Data source: ProPublica Landownership, ODF Landownership and Oregon Spatial Data Library
 Projection: Lambert Conformal Conic
 Coordinate System: NAD 1983 Harn
 Created by: Coast Range Association 2020