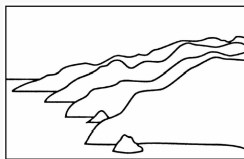




Signup for Newsletter



COAST RANGE
ASSOCIATION

Climate & Forests

A Path Breaking Green New Deal Proposal

Dear Friends and Supporters,

Even though the Coast Range Association (CRA) team has been confined to our homes for the past eight months, we've been hard at work. On January 5th, we will release our most important proposal since the CRA's *1993 Coast Range Biodiversity Conservation Plan*. The document is titled **Climate and Oregon's Industrial Forests: A Green New Deal Proposal (GND)**. No similar forest proposal exists that scales to the climate emergency and concurrently achieves the just transition goals mandated by the GND (House Resolution-109). Visit our [website](#) to get an exclusive early look at the proposal.

I write to provide details about our forest proposal, share good news about *Coast Range Radio* and discuss expected federal forest planning. Of course, please consider a generous year-end donation. To put things mildly, 2020 was terrible on our finances. The CRA is unique among grassroots advocacy organizations for the depth of analysis and creative leadership we provide.

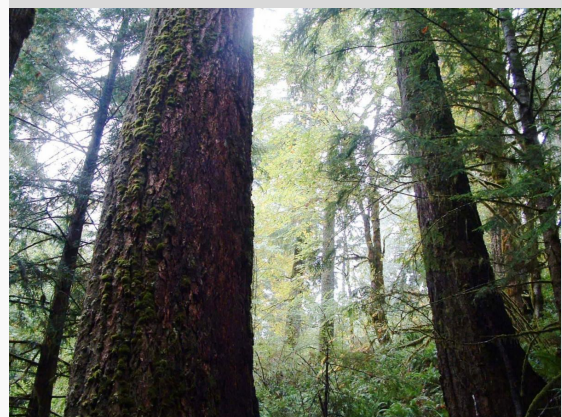
How to donate to the Coast Range Association

1. Secure [donation form](#)
2. New this year, donate appreciated [stocks, bonds or mutual funds](#).
3. You may also send a check to PO Box 2250 Corvallis, OR 97339

The CRA is a good investment!

[Donate](#)

[Stock Donations](#)



[Read the Executive Summary](#)

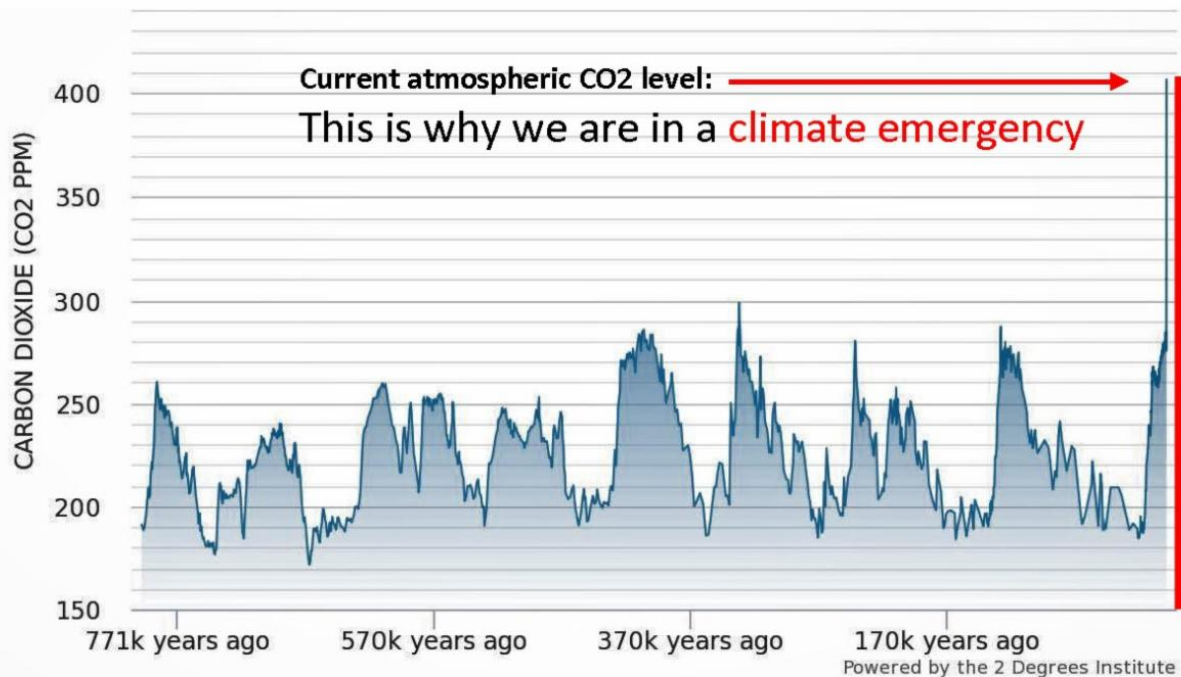
Green New Deal & Forests

Long after the Covid pandemic ends and Trump fades from view, we will continue to face the crisis of a warming planet. As long as the energy basis of civilization remains fossil fuels and current excess greenhouse gases remain in the air, nothing will stop the growing threat of climate change. Our ground-

breaking GND proposal for industrial forests addresses the immediate need for atmospheric carbon sequestration, which is something Pacific Northwest forests are uniquely able to do.

Global Atmospheric CO2 Concentration

(Past 800,000 years)



CO2 drives the earth's temperature. When CO2 levels are in the 200ppm range the earth is in an ice age. Giant ice sheets cover the northern latitudes. Then, as CO2 levels rise toward the 250ppm range warmer periods occur. The ice sheets recede and dry regions increase in size. Those huge shifts are driven by sun cycles and greenhouse gas levels. You don't need to be a scientist to look at the above graph and know that the sudden hundred year increase in CO2 over 300ppm, and then past 400ppm, will transform the earth in ways humans have never experienced. CO2 levels must be brought back down to at least 350ppm or lower.

From forest wildfires to dying coastal Sitka spruce, the signals of a warming climate have appeared in Oregon. That's why we set about applying our wide knowledge of Wall Street forestry to the carbon sequestration issue. The outcome is our path-breaking GND forest proposal.

Scientists and climate experts agree that 350 parts-per-million (ppm) is the maximum safe level of Carbon Dioxide (CO2) in the atmosphere. CO2 is currently at 411 ppm and climbing. Even if we were to stop emitting CO2 today, we would still need to sequester and store a massive amount of carbon to reach a stable climate. Scientists tell us 350ppm is the highest level allowed without massive disruption to human settled areas.

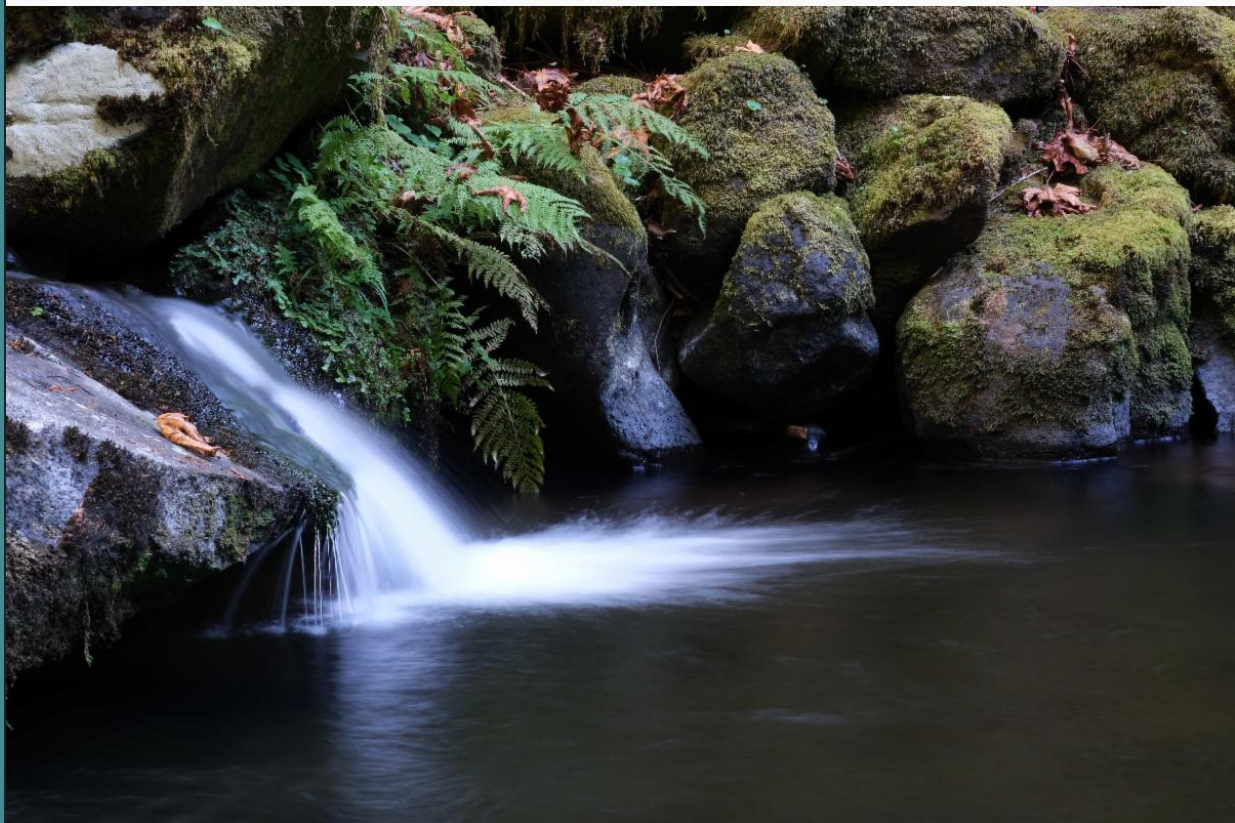
The unique contribution Pacific Northwest forests **must play in ending the climate crisis** lies in removing excess CO2 from the atmosphere. CO2 is removed from the air when forests grow larger. Our GND proposal addresses the 4.3 million acres of Oregon plantations made up of perpetually small trees. The Weyerhaeuser Company states they cut 2% of their forests each year. That's a 50 year cut cycle meaning their average plantation age is 25 years. Yet, Oregon industrial forestlands were once mighty forests storing a massive amount of atmospheric carbon. The average age, and therefore size, of today's industrial forest must be increased significantly.

Based on twenty-five years of industrial forest reform work and the mandate of the Green New Deal, we conclude that the best path forward is a buyout of **Wall Street forest owners** and the transfer of their lands to:

1. *Local, nonprofit, social benefit companies* similar to rural electric and telephone co-ops,
2. Cities, towns and water districts needing safe, clean drinking water from intact forests.
3. Tribal land restoration addressing past, historic injustices.
4. Conservancy organizations for special and unique forested areas.

New social benefit forest ownership, guided by working forest conservation easements, is a comprehensive approach to increasing carbon storage on industrial forests while providing increased prosperity to rural communities.

We are **not** calling for the end of timber production—just the opposite. By cutting less now to build forest carbon volume, the lost production from Wall Street financial management can be recovered. We know current Wall Street owners grow money not trees. If we are to solve the climate crisis, there is no place for the greed and short-sightedness of Wall Street in what could be the greatest working carbon forests in the world.



We Propose a Double Sequestration: Carbon & Cash

Growing larger forests sequesters excess CO₂ from the atmosphere. But what impact does lower timber output have on rural communities and timber workers? The Green New Deal (HR-109) requires a just transition, where impacted communities and workers are not cast aside. As such, our forest proposal is built to achieve the twin objectives:

1. Maximum carbon sequestration dictated by the climate emergency, and
2. A just transition strategy that actually benefits rural communities and

forest workers.

No other Pacific Northwest advocacy group has thought through **apeople and forest solution to its logical conclusion**: if we dramatically increase forest carbon and benefit rural people then Wall Street must go! Given less timber harvest to build carbon, the only way to keep current levels of timber income flowing to rural communities is to eliminate the cash flow to financial investors.

Paying forest owners to cut less and grow larger forests is possible. Many proposals do just that. But such proposals benefit investors and not rural communities and forest workers and often engender political backlash. Our solution is to ensure a second sequestration, that of the large timber cash flow (profits & interest payments) leaving Oregon's forests—90% of which generally goes to the wealthiest 10% of people in the U.S. or foreign equity owners.

Many of our colleagues are justly outraged by the pesticide spraying of forest landscapes. Others oppose the impact industrial forestry has on rivers, streams and wild salmon. Still other colleagues oppose the general loss of forest habitat and complexity due to plantation, monoculture forestry. The Coast Range Association is the only advocacy group whose research highlights **the huge social and economic rip-off Wall Street has foisted on western Oregon**.

The Coast Range Association was the first advocacy group to broadly reveal the extent of tax avoidance engineered Wall Street timber corporations. We are the first group to reveal who actually profits from the ownership of our forestlands—the wealthiest 1%. And our analysis reveals the huge **loss of small forest ownerships** that have been gobbled up by big corporate owners since the 1960s—as much as one million acres.

Yes, we oppose big timber's poisoning of the land, the destruction of rivers and streams, and the loss of wildlife habitat. But who is revealing the details of the destruction visited upon the social and economic fabric of rural Oregon? And who is proposing solutions as bold as the Coast Range Association?

The answer is that the Coast Range Association is revealing, proposing and leading the way. ***And that is why I ask for your renewed support today*** Please consider a generous year end donation.

The Coast Range Association's **GND for industrial forests proposal** will be available on January 5th on our website.

I believe you will agree – finally someone is getting to the bottom of the corporate forestry issue!

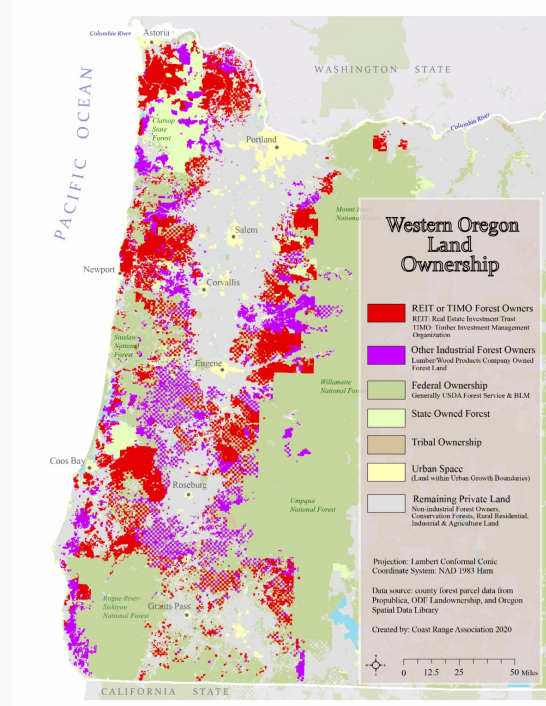
[Donate](#)

***New Forest Ownership Maps:
Make One a Holiday Gift***

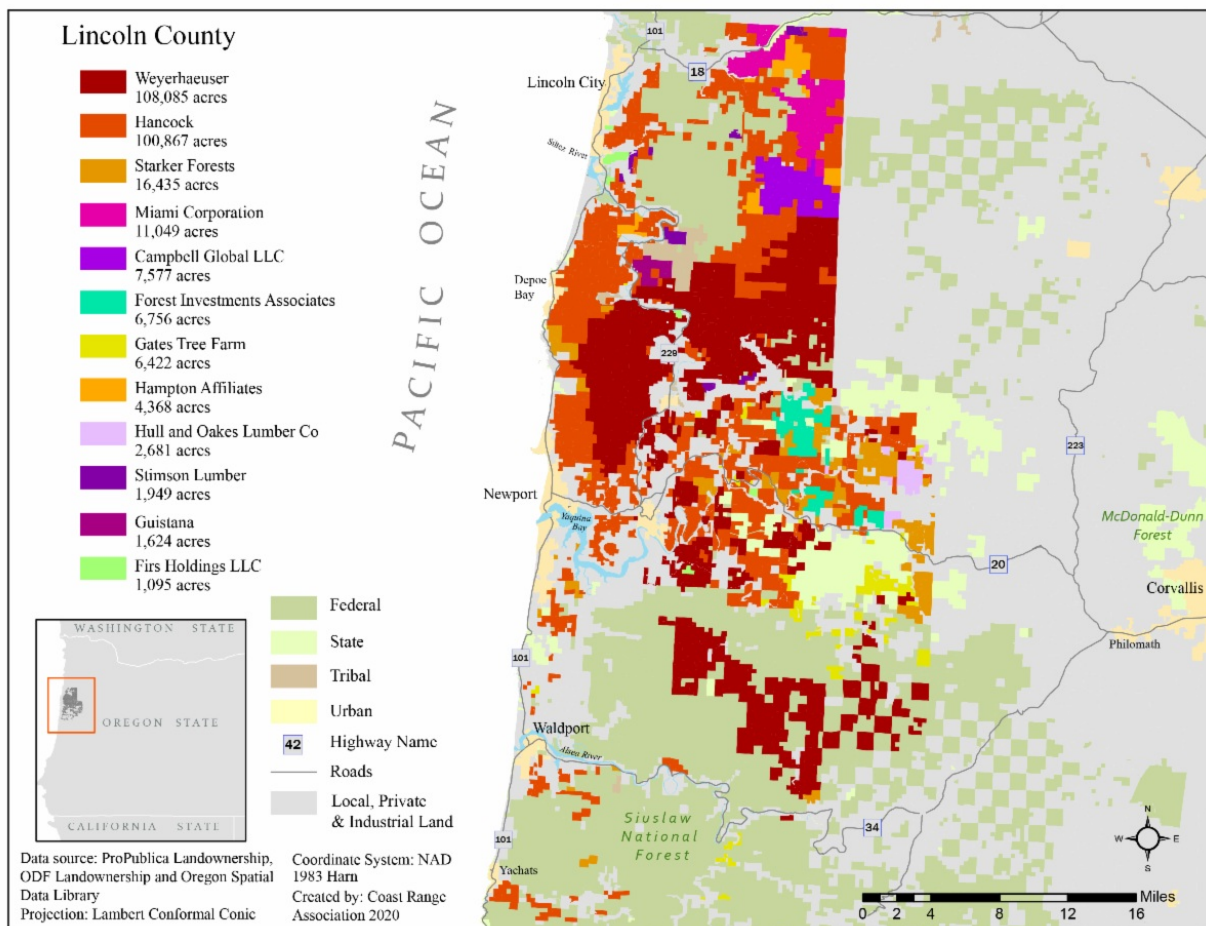
Along with the release of our path-

breaking forest proposal, we have new county-level land ownership maps. The large format, high quality color maps display the largest corporate forest owners in mapped counties. The maps are based on newly acquired 2019 data. All the maps are available on our [Challenging Wall Street Forestry](#) page.

Also available is a new, updated, large format map of all forestland ownership for western Oregon. Download any of the maps and send it a friend, son, daughter or grandchild. Ask them to learn more at [coastrange.org](#). A huge thanks goes to our mapping volunteer, Allie Vitello.



[View the Forest Ownership Maps](#)



Federal Forests

With the Biden Administration coming to power, the federal USDA Forest Service will surely restart forest planning for all forests under the Northwest Forest Plan. The Trump regime was so preoccupied with ending many national environmental protections and promoting oil and gas drilling, they apparently

didn't have the time to wreck the Northwest Forest Plan. **Here's the good news.** The CRA's entire 2008-2016 archive of Forest Service planning materials stands ready for use. With your support we are ready to provide the knowledge and tools needed for effective Forest Service planning advocacy.

All Forest Service planning starts with the **2012 Planning Rule**. You may remember, in 2014 the CRA published a readable version of the Planning Rule along with the agency's internal Planning Workbook. We also published graphics illustrating the planning process. And, in 2014 we submitted hundreds of pages of comments into the planning Science Synthesis—a key juncture in Forest Service planning. Then, with the election of Trump, all public planning ceased.

Once the Biden administration is settled in office, expect the Forest Service to renew forest planning. How will the Biden administration approach new forest plans for the Mt. Hood, Willamette, Siuslaw and Umpqua National Forests? We don't know. But much has changed over the past five years. A majority of U.S. voters have become aware of the severity of the climate situation and the fact that the hour is late for climate solutions.

Going forward, the role of climate in federal forest planning cannot be just one issue amongst many—it now must be the first issue among all issues. Your support today will help us prepare for science-based federal forest advocacy.

Coast Range Radio a Success!

With outstanding reviews and community support, [Coast Range Radio](#) now airs twice monthly on community radio stations in eleven communities across Oregon. Along the coast, the program airs on KMUN in Astoria and Tillamook, KYAQ in the Newport-Toledo area, KXCR in Florence and KBOG in Brookings. Our latest station addition is KBOO Community Radio on the evening news, aired in Portland and Corvallis. Every program is available on our [website](#) and wherever you get your podcasts.

Recent programs include:

- An in-depth discussion about wildfire, climate change and how to protect our communities with notable wildland fire ecologist and environmental sociologist Tim Ingalsbee, PhD.
- An interview with high school environmental science educator, John Borowski, on how the timber industry infiltrates science education through the industry-controlled Oregon Forest Resources Institute.
- An expanded one-hour program in January with nationally recognized good troublemaker, author and anti-herbicide activist Carol Van Strum. Carol is featured in a new documentary, *The People Vs. Agent Orange*, airing January 15 through the Darkside Cinema in Corvallis.

COAST RANGE RADIO

PRESENTS

**JOHN
BOROWSKI**

An educator's perspective
on the timber industry's
influence on Oregon's
public schools



Thank you

I hope this letter finds you healthy and secure. We have just been through four years of lies, hatred and division spread by reactionary political leaders. 2020 has certainly been difficult and troubling. I believe Trump's borderline seditious denial of the election outcome will, like the pandemic, pass. It will fall to grassroots organizations across the country to help heal divisions and overcome false narratives.

The Coast Range Association is uniquely prepared to advocate for people and nature. Our new communications capacity offers hope and the perspective needed to bridge political differences. Every day I think about the world I'll leave to my children and grandchildren. I'm sure you have similar thoughts. Let's make 2021 a year of renewal, peace and healing.

Stay strong. A better world is possible!

Sincerely,

PS. Only your support makes our effectiveness possible. A generous year end donation will allow us to deliver the climate and forest message to national leaders and Oregon's smallest communities.

Coast Range Association

Board of Directors

Yoko Silk: President Tom Petrusich: Vice President

Joan Stephens: Secretary/Treasurer

Alex Lackey David Radtke Michael Gaskill

Staff & Key Volunteers

Chuck Willer: Director Andrew Collins-Anderson: Communications

Jim Carlson: Marine Issues

Allie Vitello: GIS Mapping Lacy Todd: Communications Support

